

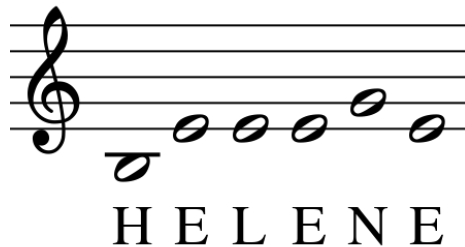
Jacques Chailley
(1910-1999)

Sur le nom d'Hélène
pour alto et piano

(1978)

<u>Do</u>	<u>Re</u>	<u>Mi</u>	<u>Fa</u>	<u>Sol</u>	<u>La</u>	<u>Si</u>
–	–	–	–	–	A	Bb
C	D	ⓔ	F	G	–	ⓗ
I.J	K	Ⓛ	M	Ⓝ	O	P
Q	R	S	T	U	V	W
X	Y	Z	–	–	–	–

Sur le nom d'Hélène



Pour "Elle",

*ce très peu de choses auprès des 40 ans
qu'elle a su rendre heureux*

sa Jacques

en souvenir de 29 octobre 1978

... et de 3 novembre 1968!

Modéré ♩ = 72 env.

Musical score for the first system, measures 1-6. The piece is in 3/4 time with a key signature of one sharp (F#). The tempo is marked 'Modéré' with a quarter note equal to 72 beats per minute. The first system consists of six measures. The upper staff (treble clef) is mostly empty, while the lower staff (bass clef) contains the main melodic and harmonic material. The dynamic marking *mf* is present at the beginning.

Musical score for the second system, measures 7-11. This system is divided into two sections, A and B. Section A (measures 7-10) features a melodic line in the upper staff and a bass line in the lower staff, both marked *p*. Section B (measures 10-11) continues the melodic line in the upper staff, also marked *p*. The lower staff provides harmonic support with chords and moving bass lines.

Musical score for the third system, measures 12-16. This system is divided into two sections, C and D. Section C (measures 12-15) features a melodic line in the upper staff and a bass line in the lower staff, both marked *mf*. Section D (measures 15-16) continues the melodic line in the upper staff, also marked *mf*. The lower staff provides harmonic support with chords and moving bass lines.

Musical score for the fourth system, measures 17-21. This system is divided into two sections, D and E. Section D (measures 17-20) features a melodic line in the upper staff and a bass line in the lower staff, both marked *mf*. Section E (measures 20-21) continues the melodic line in the upper staff, also marked *mf*. The lower staff provides harmonic support with chords and moving bass lines.

22 **E** **F**

28 pizz. *p*

20 septembre 1978